

HOLTEC PROPRIETARY

D

C

B

A

HOLTEC PROPRIETARY

HOLTEC PROPRIETARY

D

C

B

A

HOLTEC PROPRIETARY

8

7

6

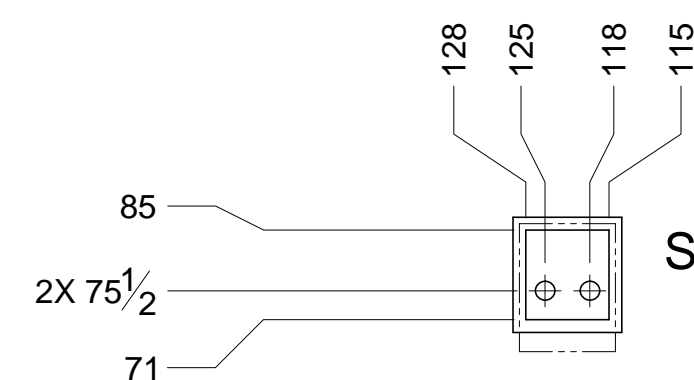
5

4

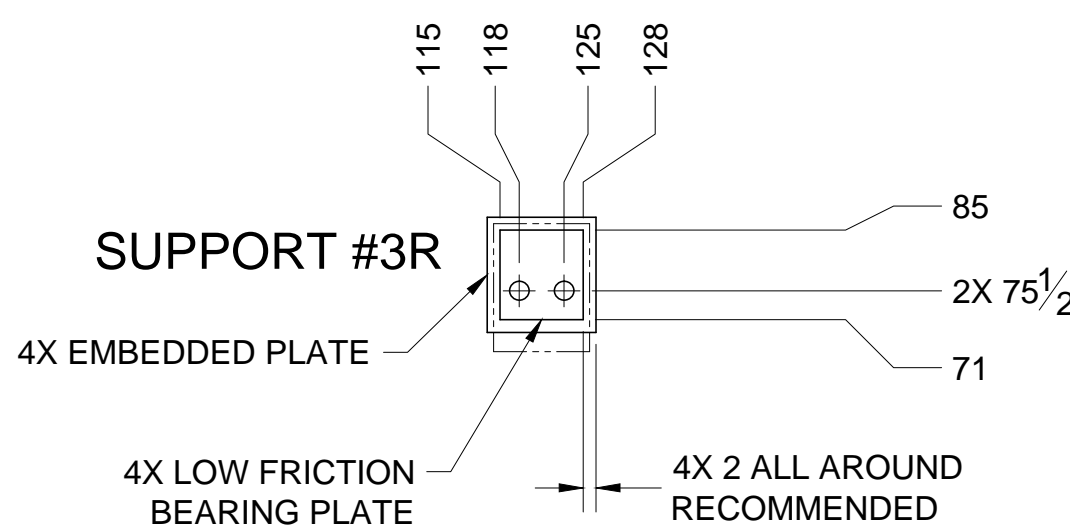
3

2

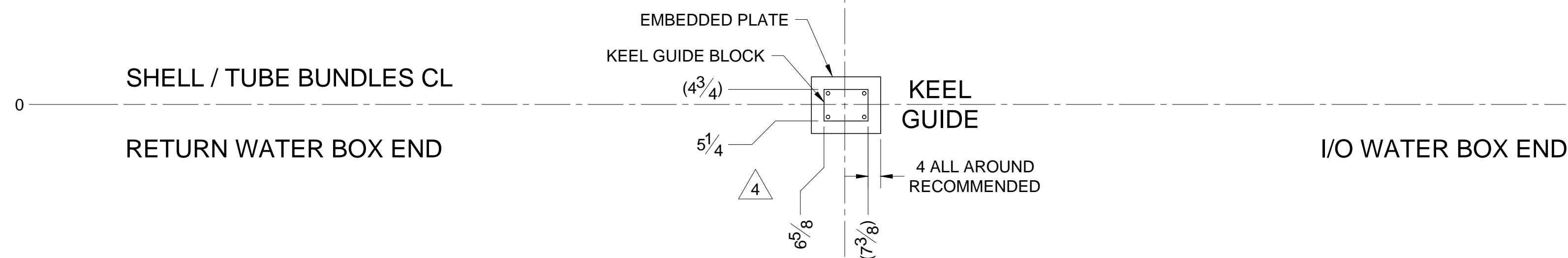
1



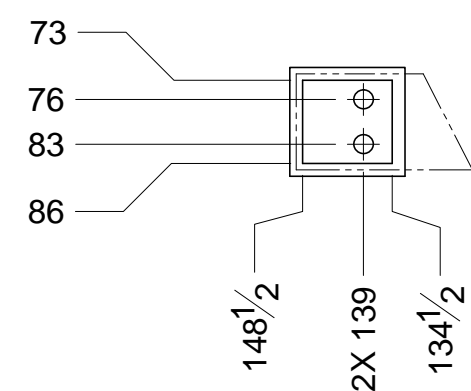
SUPPORT #3L



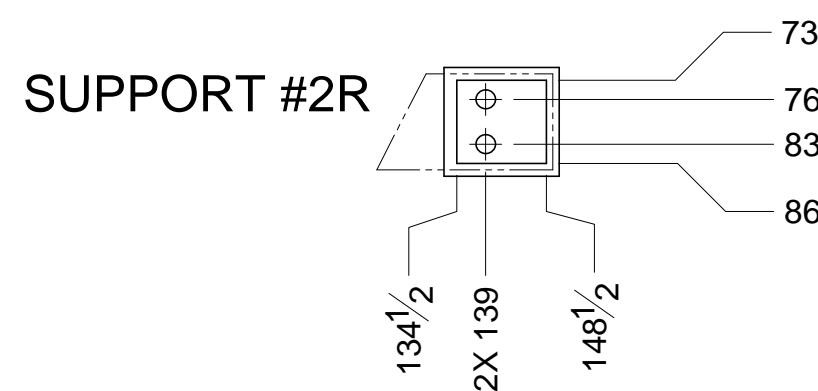
SUPPORT #3R



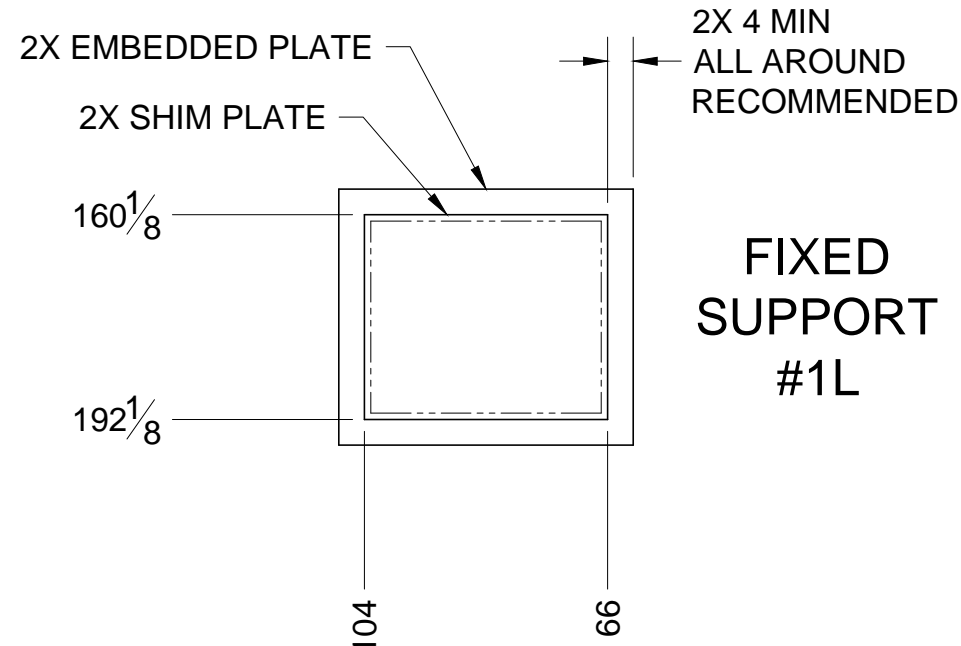
KEEL GUIDE



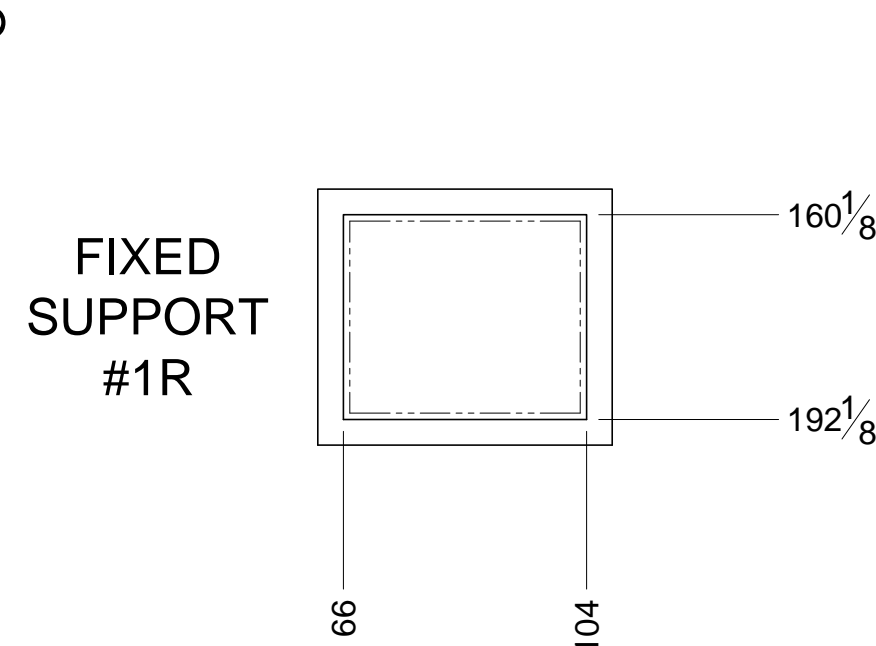
SUPPORT #2L



SUPPORT #2R



FIXED SUPPORT #1L

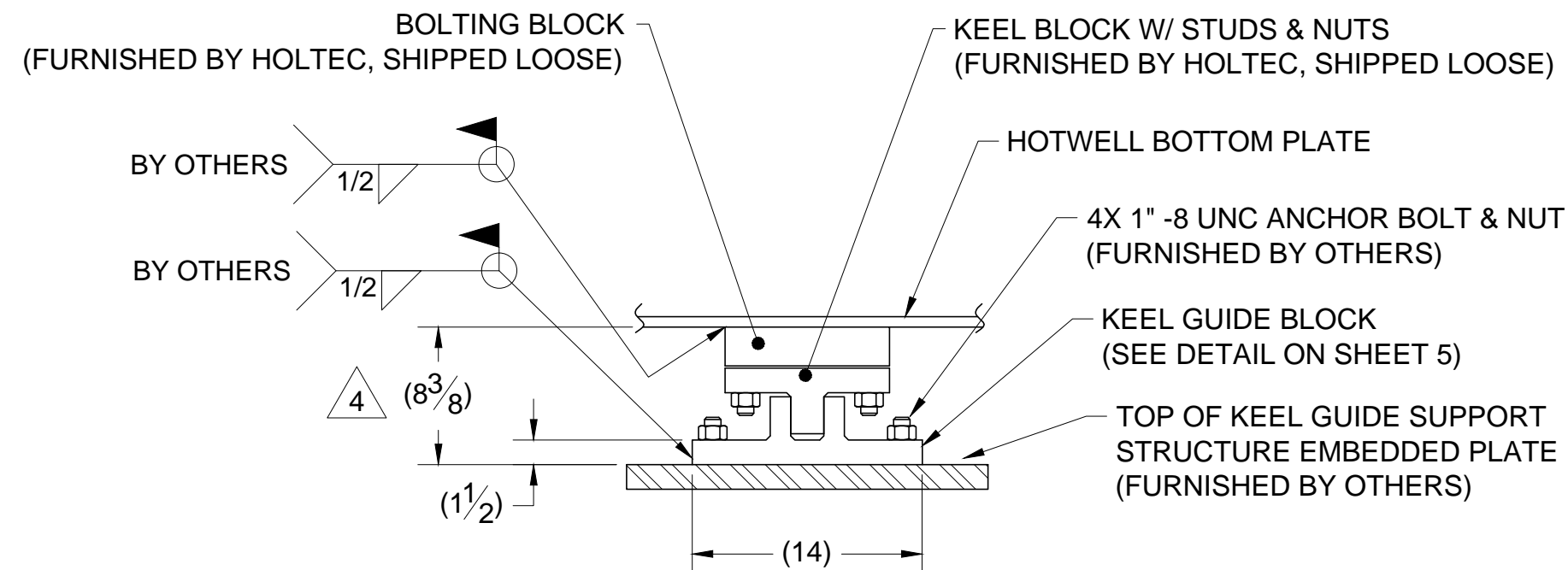


FIXED SUPPORT #1R

FOUNDATION PLAN VIEW

SCALE 1:30

CONDENSER SUPPORT SOLE PLATES ARE SHOWN IN PHANTOM.
 NOTE: FOUNDATIONS FOR SUPPORTS #2 & #3 SHALL EXCEED EMBEDDED PLATES BY A MAXIMUM OF 2" TO ALLOW SPACE BETWEEN FOUNDATION AND CONDENSER SHELL.

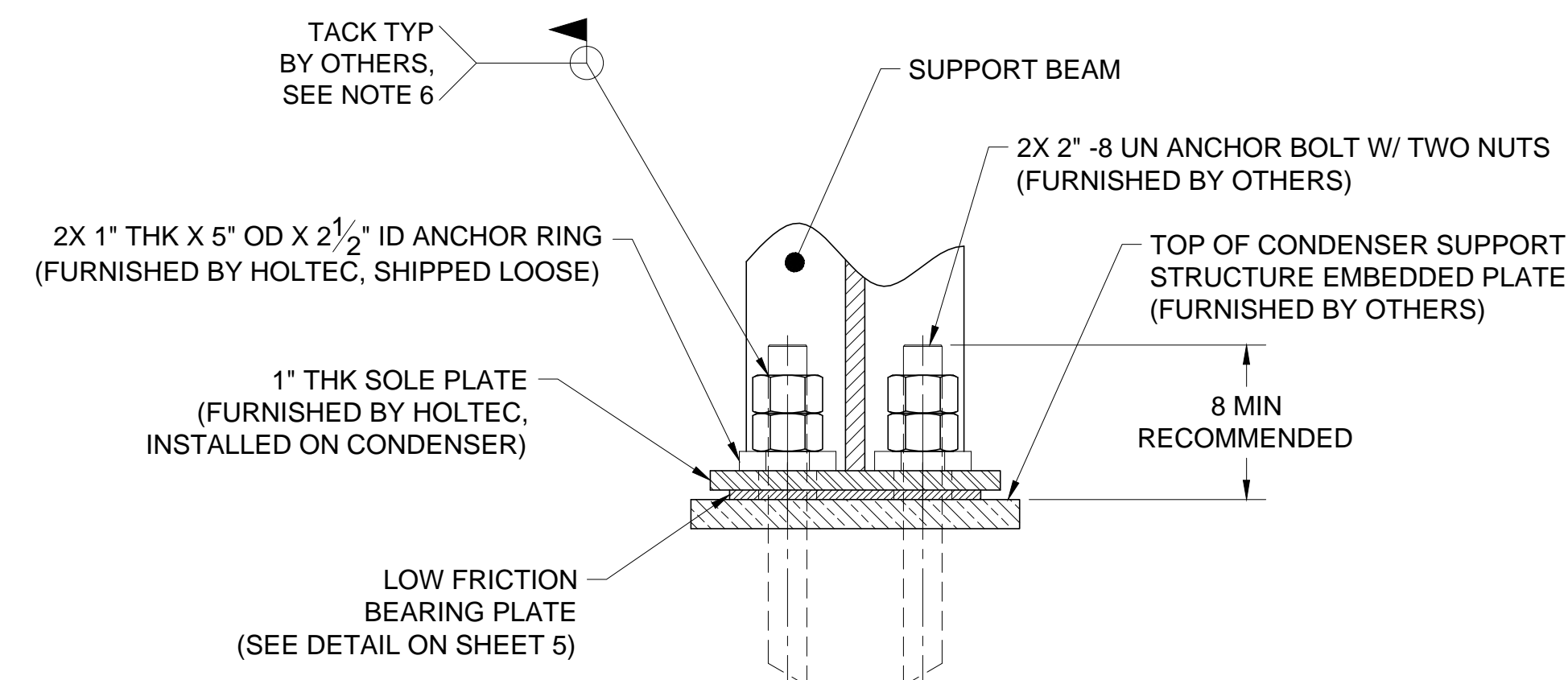


KEEL GUIDE ELEVATION DETAIL

SCALE 1:10

NOTES:

1. TOP OF EMBEDDED PLATE TO BE FLAT WITHIN $\frac{1}{16}$ " AFTER GROUTING.
2. RECOMMENDED EMBEDDED PLATE MATERIAL = SA-516 70.
3. ANCHOR BOLT SIZE BASED ON F-1554 GR 36 MATERIAL SPECIFICATIONS.

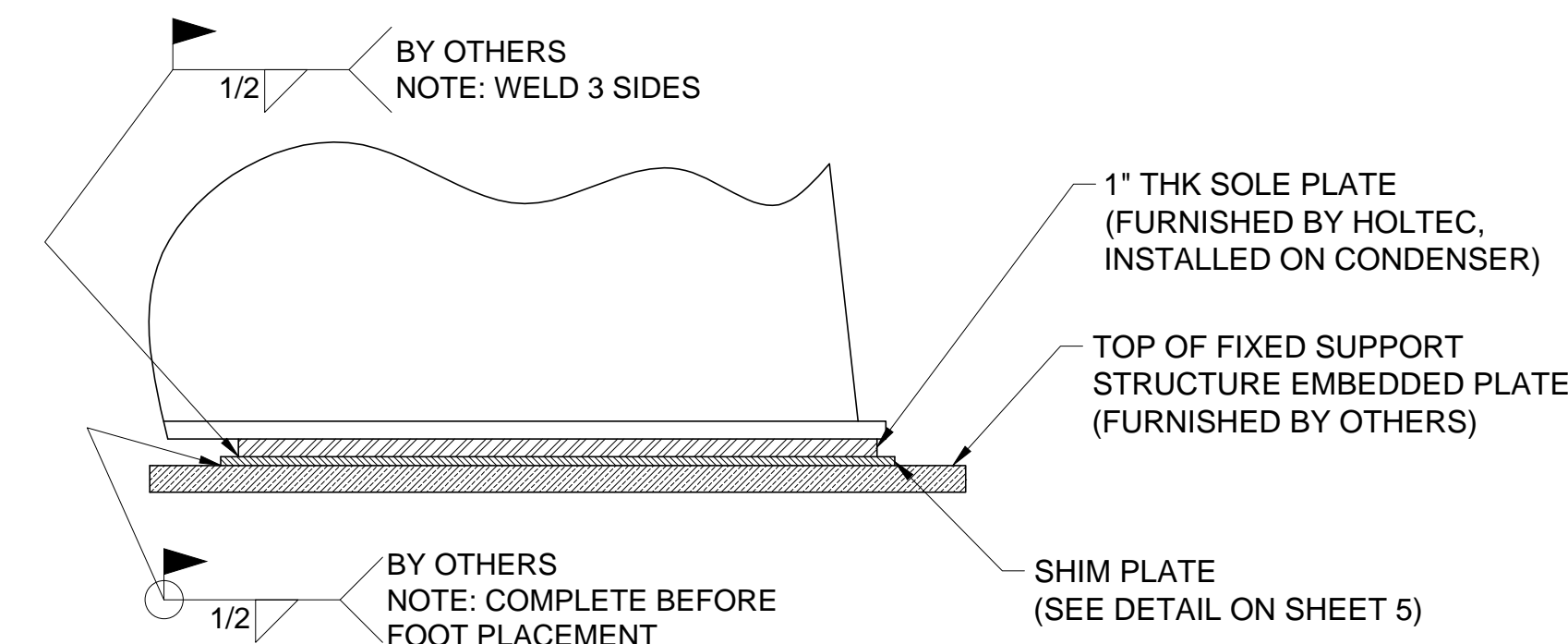


SUPPORTS #2 / #3 ELEVATION DETAIL

SCALE 1:8

NOTES:

1. ANCHOR BOLT PROJECTION IS FROM TOP OF EMBEDDED PLATE.
2. TOP OF EMBEDDED PLATE TO BE FLAT WITHIN $\frac{1}{16}$ " AFTER GROUTING.
3. LOW FRICTION BEARING PLATE TO BE PLACED ON EMBEDDED PLATE PRIOR TO CONDENSER INSTALLATION.
4. RECOMMENDED EMBEDDED PLATE MATERIAL = SA-516 70.
5. ANCHOR BOLT SIZE BASED ON F-1554 GR 36 MATERIAL SPECIFICATIONS.
6. ANCHOR NUTS SHALL BE FINGERED TIGHTENED ONLY PRIOR TO TACK WELDING IN PLACE.



FIXED SUPPORTS #1 ELEVATION DETAIL

SCALE 1:10

NOTES:

1. TOP OF EMBEDDED PLATE TO BE FLAT WITHIN $\frac{1}{16}$ " AFTER GROUTING.
2. SHIM PLATE TO BE FIRST WELDED TO EMBEDDED PLATE, THEN WELDED TO SOLE PLATE. WELD PROCEDURES BY OTHERS.
3. RECOMMENDED EMBEDDED PLATE MATERIAL = SA-516 70 OR SA-36.
4. SHIM PLATE MATERIAL = SA-516 70.
5. ANCHOR BOLT SIZE BASED ON F-1554 GR 36 MATERIAL SPECIFICATIONS.

THIS DRAWING IS THE INTELLECTUAL PROPERTY OF HOLTEC INTERNATIONAL. IT IS PROVIDED TO THE RECIPIENT UNDER THE EXPLICIT CONDITION THAT IT WILL NOT BE DUPLICATED IN WHOLE OR PART, OR GIVEN TO OTHERS WITHOUT WRITTEN CONSENT OF HOLTEC INTERNATIONAL.

PROJECT / CLIENT
HOLTEC INTERNATIONAL
 POWER PLANT COMPONENTS DIVISION
 HOLTEC CENTER
 555 LINCOLN DRIVE WEST
 MARLTON, NJ 08053 (USA)

TITLE
GENERAL ARRANGEMENT DRAWING FOR STEAM SURFACE CONDENSER

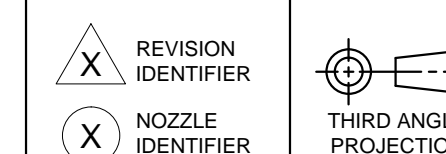
CLIENT JOB NO. 104009
 ENGINEER ZACHRY ENGINEERING CORPORATION

CLIENT P.O. NO. 554652
 LOCATION GAINESVILLE, FLORIDA

CLIENT DOC. NO. O-A014200-SPCG481116
 SIZE D PROJECT NO. 2135 DRAWING NO. 8284 SHEET 6 OF 8 REV. 7

FILE PATH: G:\PROJECTS\2135-0-DRAWINGS\GAI\8284_REV 7 PLOTTED July 30, 2012 1:57:11 PM BY TY PETRAKIS

UNLESS OTHERWISE SPECIFIED
 ALL DIMENSIONS ARE IN INCHES.
 BRACKETED [] DIMENSIONS ARE IN mm.
 DO NOT SCALE DRAWING.
 INTERPRET DIMENSIONING AND TOLERANCING PER ASME Y14.5M-1994.
 TOLERANCES PER APPLICABLE H.E.I. STANDARD.



8

7

6

5

4

3

2

1